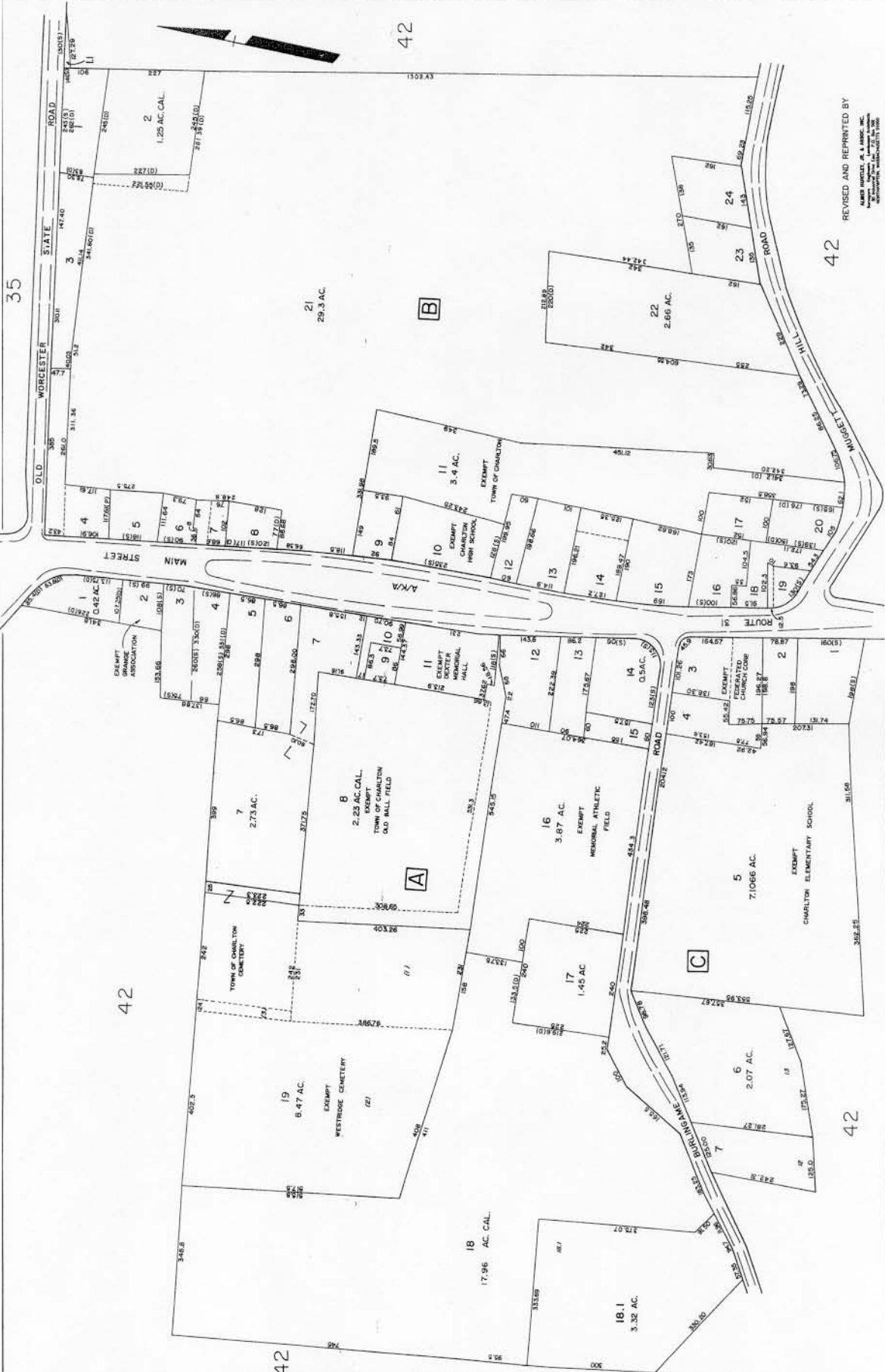


35

42

42

42



REVISED AND REPRINTED BY  
GEOGRAPHIC ASSOCIATES, INC.  
1000 WEST 10TH AVENUE  
DENVER, COLORADO 80202

FOR TAX PURPOSES ONLY  
NOT TO BE USED FOR CONFORMANCE  
PURPOSES  
GENERAL MAPPING, INC.  
Troy, N.Y. 12187

LEGEND

PROPERTY LINE	---
STREET CENTERLINE	---
STREET RIGHT-OF-WAY	---
STREET CENTERLINE	---
STREET RIGHT-OF-WAY	---
STREET CENTERLINE	---
STREET RIGHT-OF-WAY	---
STREET CENTERLINE	---
STREET RIGHT-OF-WAY	---

REVISIONS

NO.	DATE	DESCRIPTION
1	12-31-75	CARTOGRAPHIC ASSOCIATES, INC.
2	12-31-76	GENERAL MAPPING, INC. (12-31-75)
3	12-31-77	GENERAL MAPPING, INC. (12-31-76)
4	12-31-78	GENERAL MAPPING, INC. (12-31-77)
5	12-31-79	GENERAL MAPPING, INC. (12-31-78)
6	12-31-80	GENERAL MAPPING, INC. (12-31-79)
7	12-31-81	GENERAL MAPPING, INC. (12-31-80)
8	12-31-82	GENERAL MAPPING, INC. (12-31-81)
9	12-31-83	GENERAL MAPPING, INC. (12-31-82)
10	12-31-84	GENERAL MAPPING, INC. (12-31-83)
11	12-31-85	GENERAL MAPPING, INC. (12-31-84)
12	12-31-86	GENERAL MAPPING, INC. (12-31-85)
13	12-31-87	GENERAL MAPPING, INC. (12-31-86)
14	12-31-88	GENERAL MAPPING, INC. (12-31-87)
15	12-31-89	GENERAL MAPPING, INC. (12-31-88)
16	12-31-90	GENERAL MAPPING, INC. (12-31-89)
17	12-31-91	GENERAL MAPPING, INC. (12-31-90)
18	12-31-92	GENERAL MAPPING, INC. (12-31-91)
19	12-31-93	GENERAL MAPPING, INC. (12-31-92)
20	12-31-94	GENERAL MAPPING, INC. (12-31-93)
21	12-31-95	GENERAL MAPPING, INC. (12-31-94)
22	12-31-96	GENERAL MAPPING, INC. (12-31-95)
23	12-31-97	GENERAL MAPPING, INC. (12-31-96)
24	12-31-98	GENERAL MAPPING, INC. (12-31-97)
25	12-31-99	GENERAL MAPPING, INC. (12-31-98)
26	12-31-00	GENERAL MAPPING, INC. (12-31-99)

TOWN OF CHARLTON  
BOARD OF ASSESSORS  
CHARLTON, MASS.

MAP NO. 42A  
DATE: AERIAL PHOTOGRAPHY 4-07-73  
PHOTO NO. 3-07  
SCALE: 1" = 100'